

# Product Information

---

**DT Accessories**  
**DT-TPC**

---

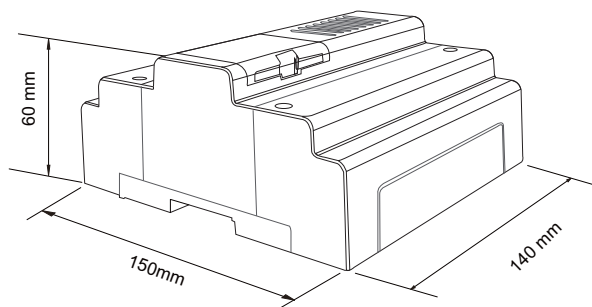


---

## DESCRIPTION

2-wire system telephone converter

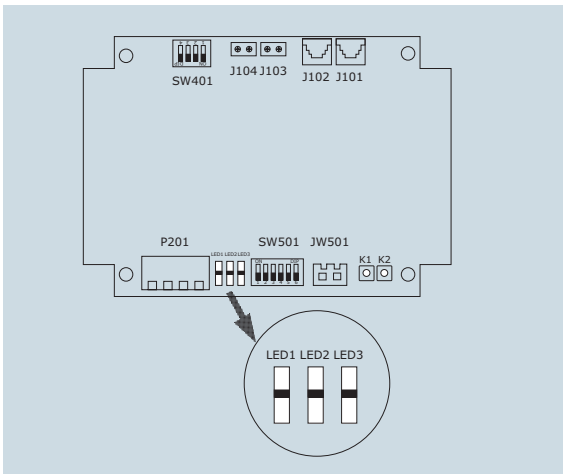
## DIMENSION



## FEATURES

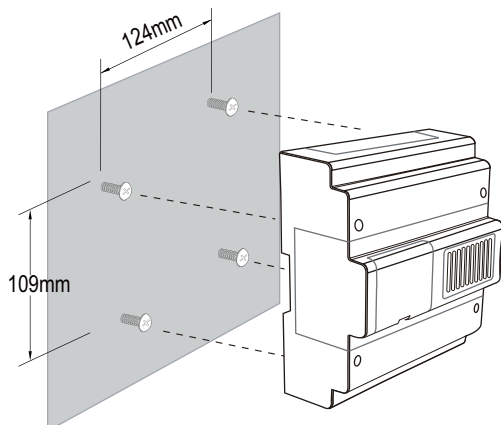
- ▶ Telephone transfer to fixed telephone or mobile phone
  - ▶ Maximum 3 telephone number can be set on monitor.
  - ▶ Must be with TPC function for monitor
  - ▶ Application: villa and apartment
-

## 1. Parts and Functions

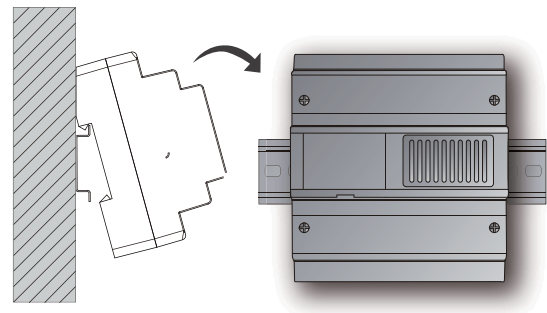


- **P201:** Main connection port
- **LED1:** Indicator
- **LED2:** Indicator
- **LED3:** Indicator
- **K1:** Control working mode
- **K2:** Control working mode
- **SW501:** DIP switches, set the configuration
- **JW501:** 485 connection port
- **J101:** Connect to the telephone network
- **J102:** Connect to the telephone
- **J103:** The same as J101, just terminal is different
- **J104:** The same as J102, just terminal is different
- **SW401:** DIP switches, set the configuration

## 2. Unit Mounting



Direct Wall Mounting



DIN Rail Mounting

## 3. Specification

- \* Power Supply : DC 24V;
- \* Power Consumption: Standby 30mA; Working status 125mA;
- \* Temperature:  $-10^{\circ}\text{C}\sim+40^{\circ}\text{C}$ ;
- \* Wiring: 2 wires (non-polarity);
- \* Dimension:  $140(\text{H})\times 150(\text{W})\times 60(\text{D})\text{mm}$

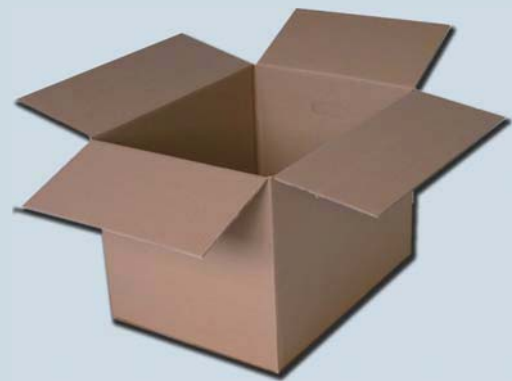
#### 4. Ordering Information

Model No.	Brief Description	Remark
DT-TPC	Telephone convertor	Divert calls from monitor to telephone

#### 5. Packing Information



Dimensions: 153(H) X148(W) X68(D) mm  
Gross Weight: 0.5Kg



Carton: 495(H) X403(W) X310(D) mm  
Quantity: 30PCS